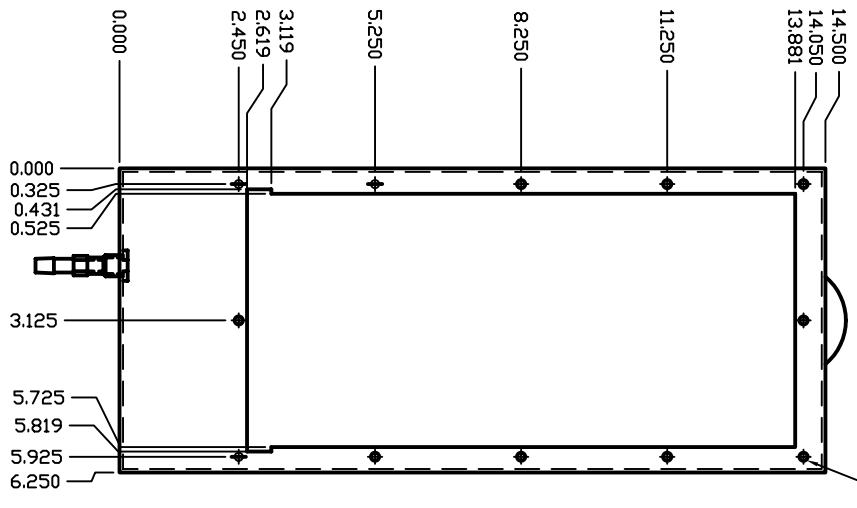
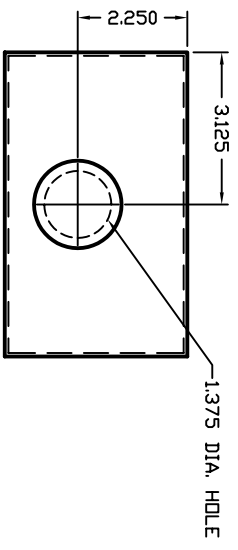
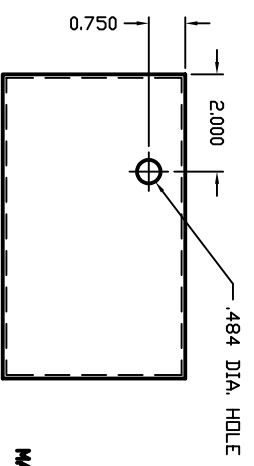


REV.	DATE	DESCRIPTION
C	10-11-05	3.750 DEPTH WAS 3.375

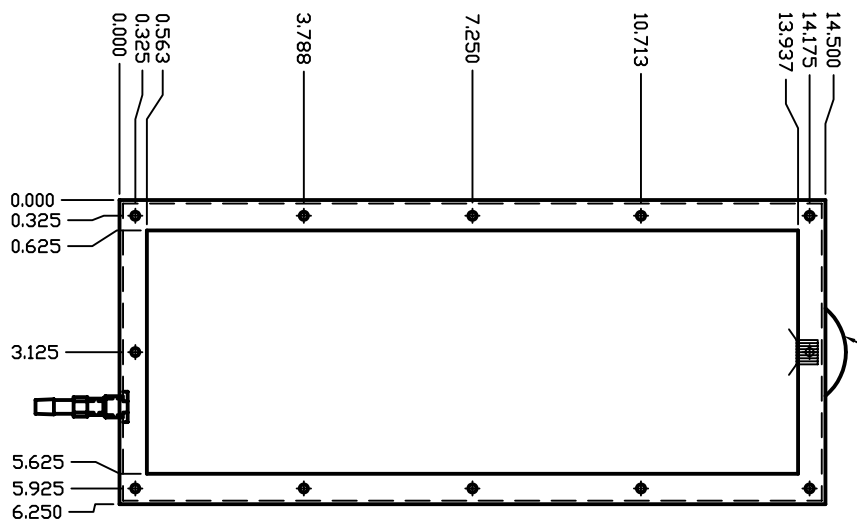
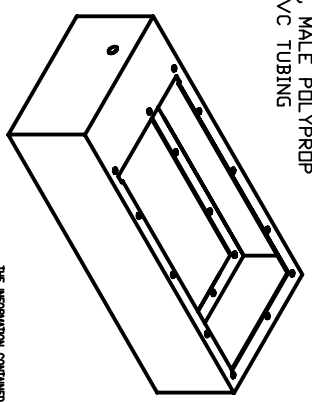
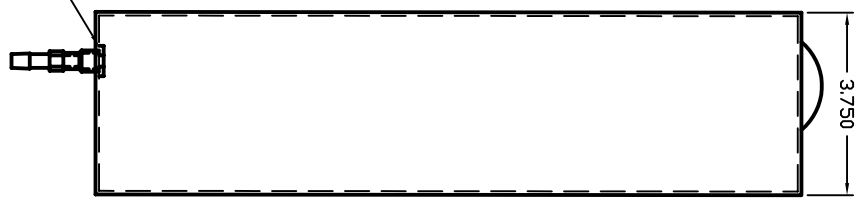


STAINLESS STEEL PEMs (24X)
PEM ENGR. & MFG.
PT. # SP-832-2

AIR CONDITIONER SIDE



.484 DIA. HOLE FOR DRAIN
WITH BRASS FITTING, MALE POLYPROP
TUBE FITTING AND PVC TUBING



KNOCK-OUT SEAL FOR
THERMOSTAT ACCESS

ENCLOSURE SIDE

**EXTENSION FRAME, #EF-140B
FOR AAC-140B SERIES**

**MATERIAL : 16 GA. STAINLESS STEEL
TYPE 304**

THE INFORMATION CONTAINED HEREIN IS
PROPRIETARY AND CONFIDENTIAL TO
EIC SOLUTIONS, INC. ANY REUSE OR
DISSEMINATION OF THIS
INFORMATION IS STRICTLY FORBIDDEN
WITHOUT THE EXPRESS WRITTEN
CONSENT OF EIC SOLUTIONS, INC.

TOLERANCES
UNLESS NOTED
DIMENSIONS 1/16
2 DECIMALS
3 DECIMALS
DIMENSIONS 1"

EIC SOLUTIONS, INC.
1825 Stout Dr., Warminster, PA 18974
(215) 443-5190 FAX: (215) 443-9564
www.aac-solutions.com

EF-140B EXTENSION FRAME
DRAWN: JMK SCALE: N.T.S.
DATE: 7/14/02 REV: CA-417
C